



- when it has to be **right**



Product: iCON office
Date: 22.01.2020
From: Torgny Israelsson

iCON office release of version 2019.3.14.31

We are pleased to announce an engineering release of iCON office 2019.3.14. All users with a valid subscription will be able to install and run this new version. Verify that that your subscription date expires after the build date of this iCON office version.

In addition to maintenance and bug fixes iCON office now supports international characters in both file names and file content. The ConX integration is improved with a function to download logged points filtered based on date and time, machine or active reference model.

These and other improvements are described in more detail in this document.

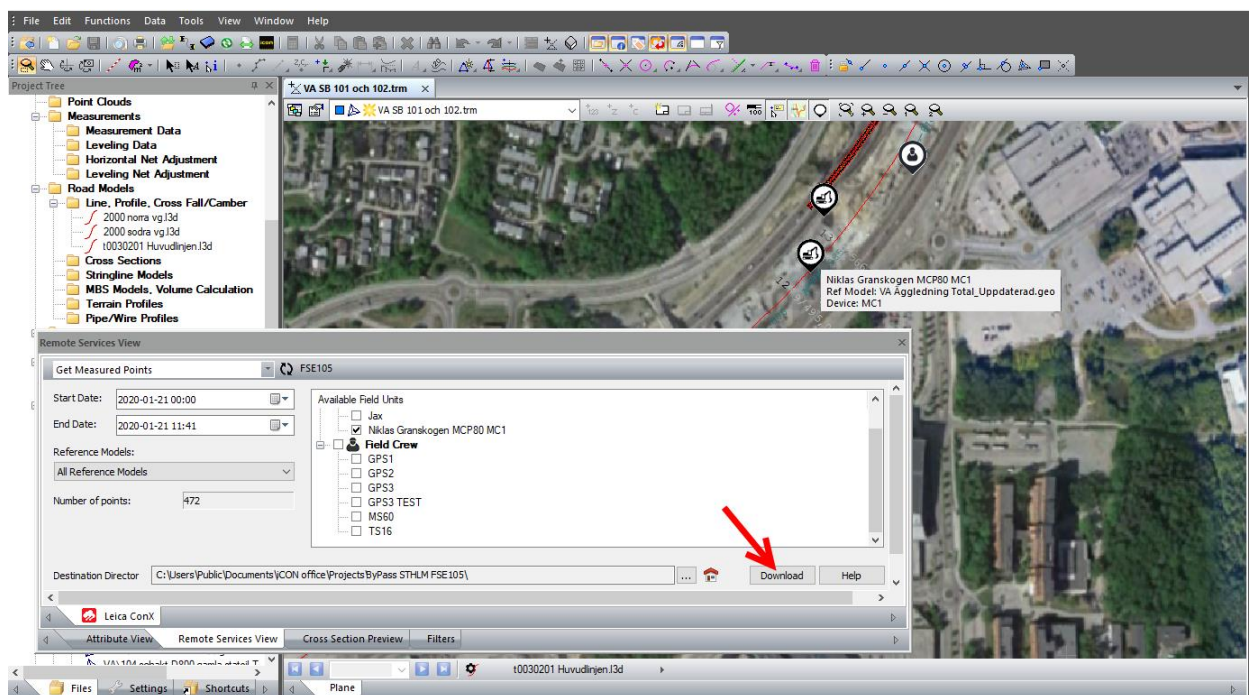




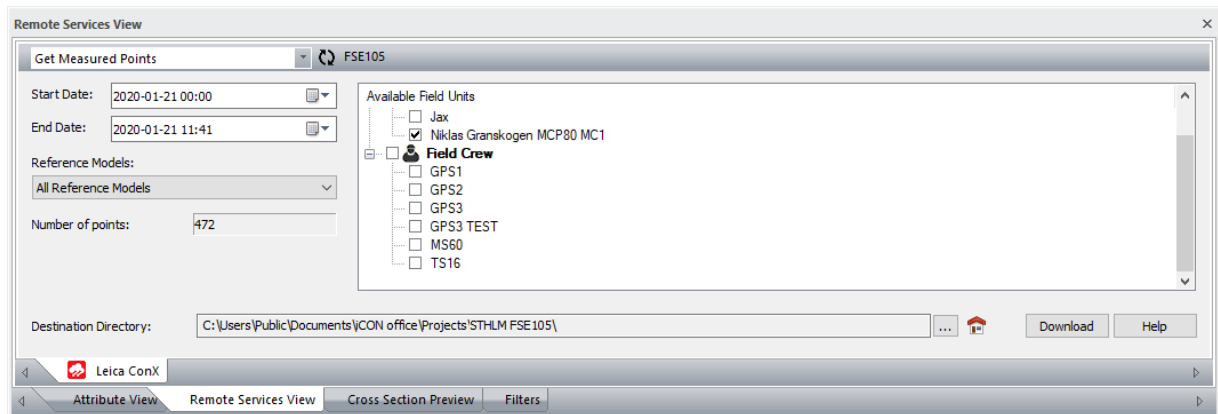
Table of Contents

1	New Functions and Improvements	3
1.1	Leica ConX – Download Logged Points	3
1.2	Volume Calculation	3
1.3	System	4
1.4	IFC Improvements	5
1.5	3D Graphics.....	6
1.6	Clear Zero Heights.....	7
1.7	Bug Fixes and Maintenance.....	7
2	iCON office modules	8
3	Update Service (Subscriptions)	8
4	Leica myWorld	8
5	Dongle Tool	9

1 New Functions and Improvements

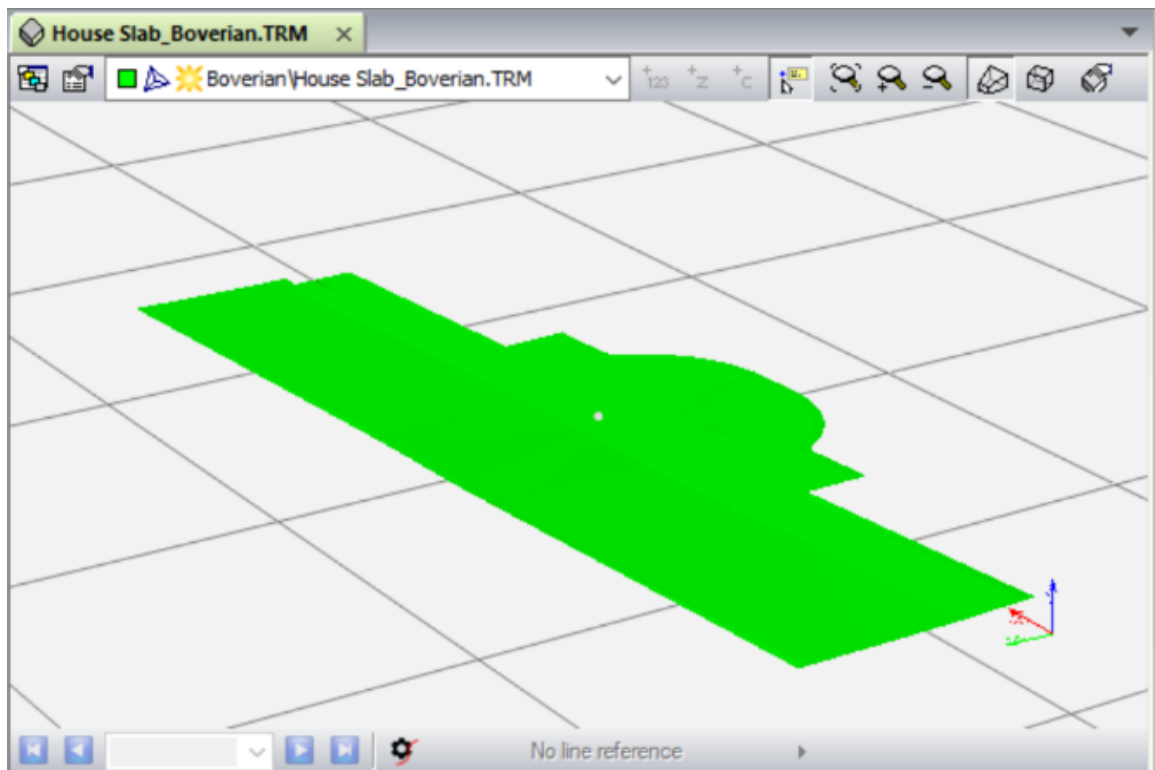
1.1 Leica ConX – Download Logged Points

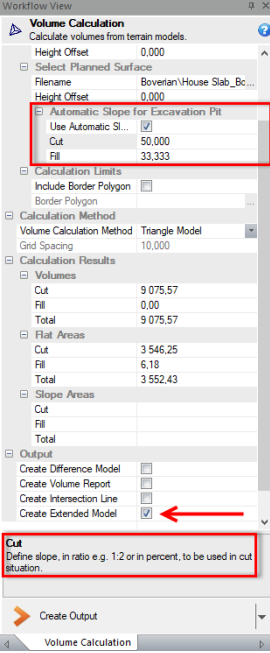
The ConX integration is improved with a new function called “Get Measured Points”. The user can filter logged/measured points based on date and time, unit or active reference model and download the selection to the active iCON office project for further processing. The points will be saved as both global latitude and longitude coordinates (*.llc) and local grid coordinates (*.geo), if a coordinate system is selected in active project.



1.2 Volume Calculation

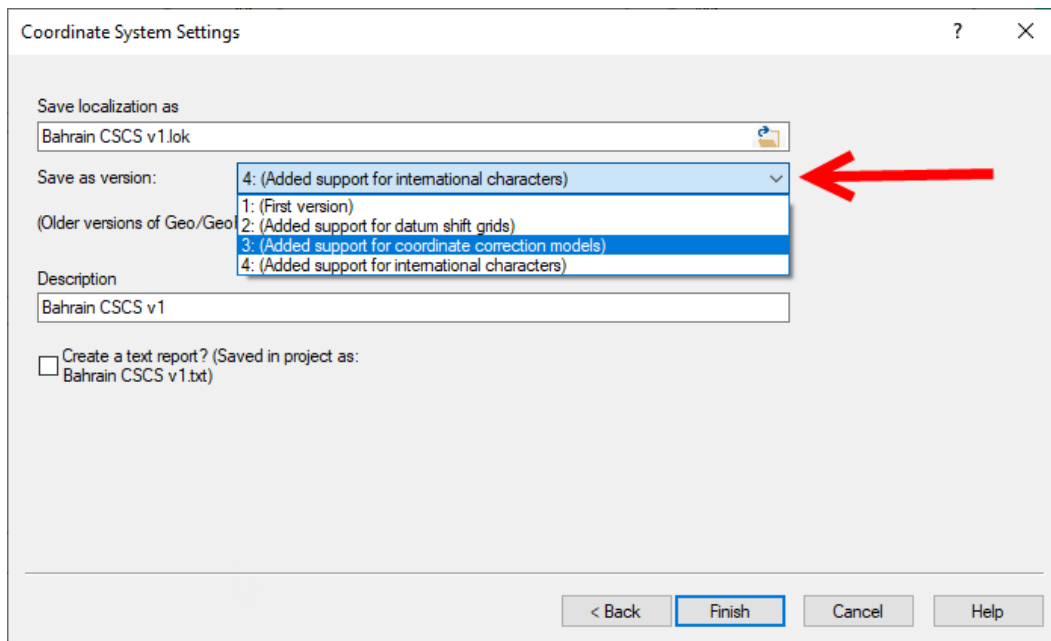
In the volume calculation (Function >> Volume Calculation, Terrain Model) an option called Automatic Slope for Excavation Pit is added. A planned surface, e.g. a house slab, can be extended to an existing surface with a user defined slope.





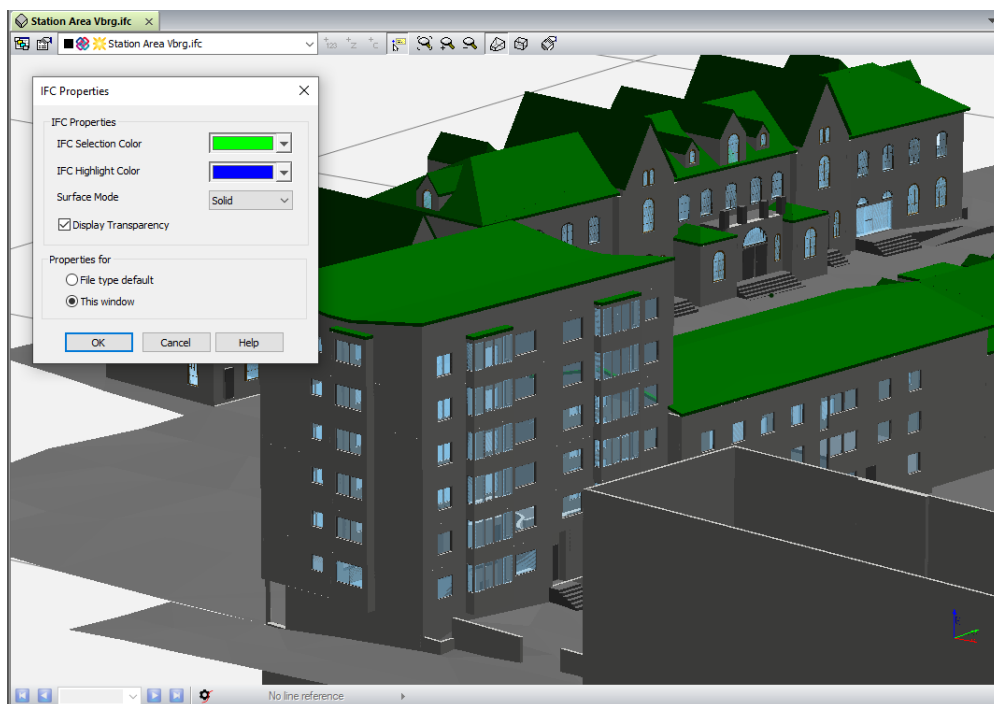
House Slab_Excavation.trm		House Slab_Excavation.trm		M-Modell	
<h2>Volume Calculation, Difference Model</h2> <p>Created: 2020-01-21</p>					
Existing Surface:	Boverian\M-Modell.trm		Height Offset:	-	
Planned Surface:	Boverian\House Slab_Boverian.TRM		Height Offset:	-	
Calculation Limits:					
Method:	Triangle Model				
			Automatic Slope for Excavation Pit: Cut: 1:2 Fill: 1:3		
	Volume (m3)	Flat Areas (m2)		Slope Areas (m2)	
Cut:	9 075,57	3 546,25			
Fill:	0,00	6,18			
Total:	9 075,57	3 552,43			

:CON office:

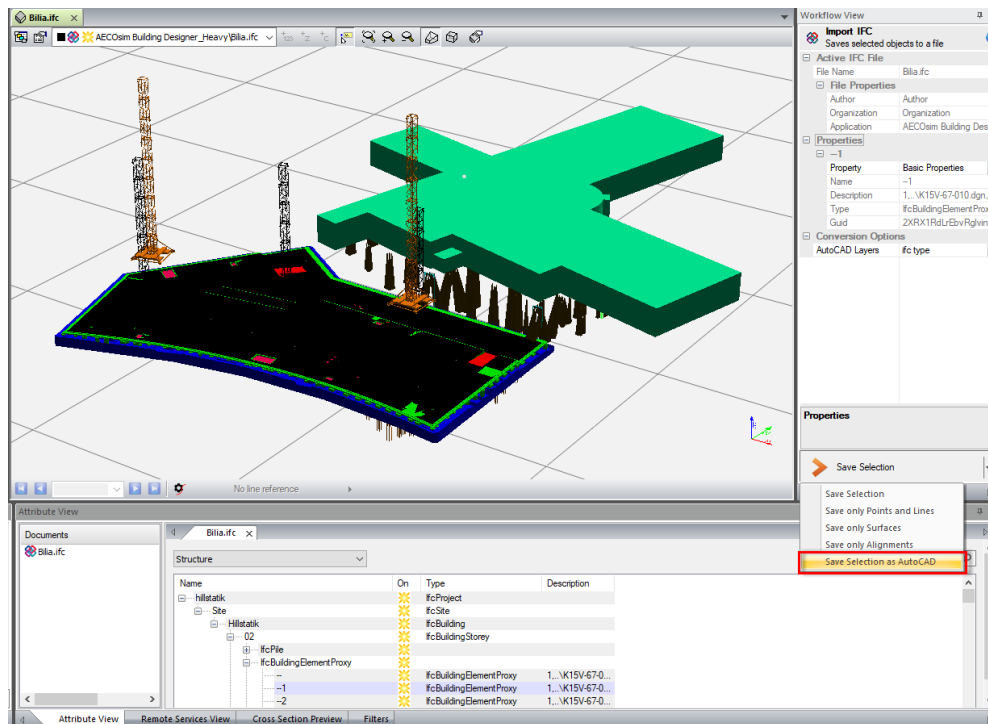


1.4 IFC Improvements

- Support for display of transparent surfaces
- Settings to display surfaces or wireframe
- Settings for colors for selected objects



- Save selected objects to DWG / DXF directly from the IFC model.

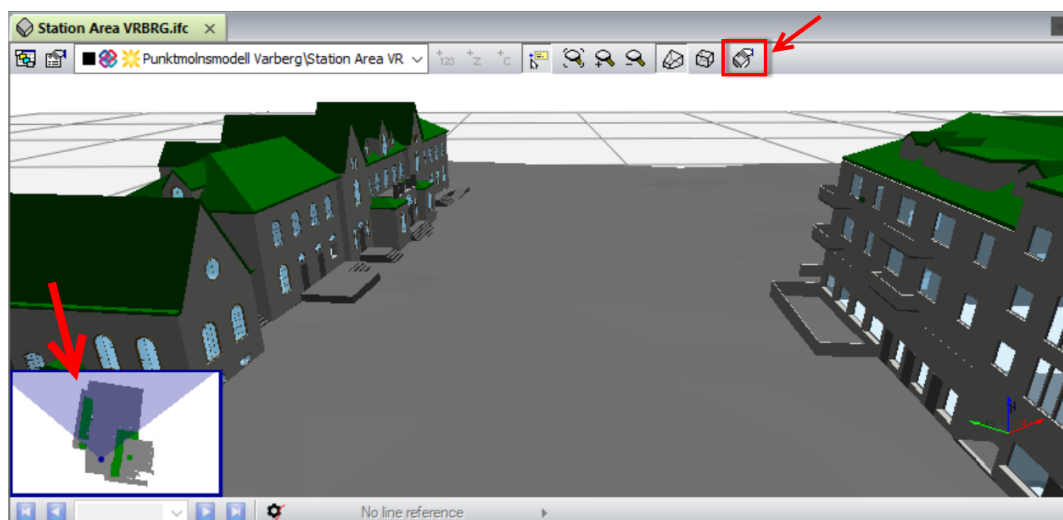


1.5 3D Graphics

Possible to move the camera position in the 3D view, use the following keys:

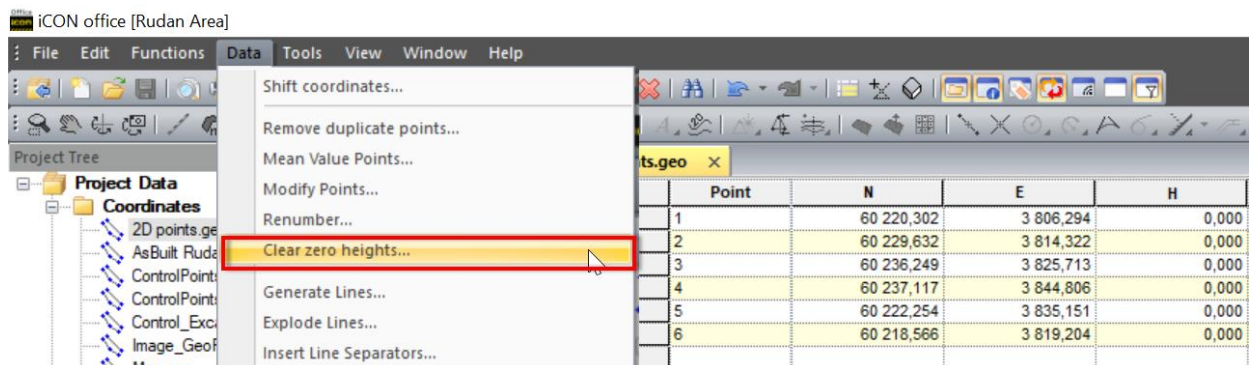
- [+] Move forward 1 meter
- [-] Move backward 1 meter
- [Shift] Moving faster
- [Ctrl] Moving slower
- [<] or [A] Turn left
- [>] or [D] Turn right
- Arrow up or [W] Turn up
- Arrow down or [S] Turn down

In the 3D Graphic Properties, it's possible to turn on an overview window to facilitate the navigation.

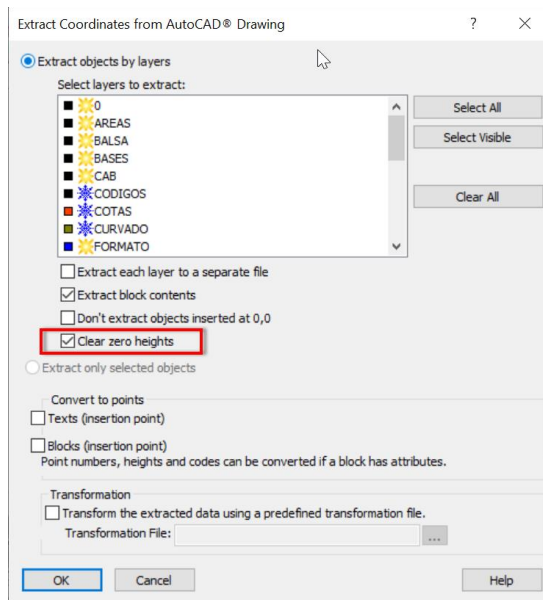


1.6 Clear Zero Heights

A new function called “Clear zero heights” is added to the Data menu for coordinate files. Zero [0] is a valid height, so this function will remove [0] and leave the height column blank.



In the import of AutoCAD files, the option “Clear zero heights” will remove the [0] heights and leave the height column empty.



1.7 Bug Fixes and Maintenance

- 3D graphics issue for Intel(R) UHD Graphics 620 and 630 cards is fixed.
- Not possible to create Cut and Fill Map without saving the DFM first is fixed.
- In some cases, iCON office could crash when connecting a project to a ConX project.
- Import of Trimble jobxml is fixed.
- Import of Leica DBX didn't not create lines correctly.
- Import of Leica DBX didn't handle the prism constant correctly in some cases.
- The center line was missing in the LandXML import of DesignCrossSectSurf, if the LMD option was selected.
- Updated help text
- Updated Polish translation

2 iCON office modules

- 797955 CSW301 **Core Module** – Import/Export and basic functionality

Add-On modules:

- 797956 CSW302 **Road** – Advanced road line calculations
- 797957 CSW303 **Terrain** - Volume calculation model to model
- 797958 CSW304 **Volume** - Volume calculation by sections
- 797959 CSW305 **Tunnel** – Tunnel functionality
- 797580 CSW306 **Net Adjustment** - Network adjustment and calculations
- 832546 CSW313 **Point Cloud** – Import and filtering of scanning data

Available packages:

- 6007380 iCON office Core package, includes installation package, Core
- 6007381 iCON office Terrain package, includes installation package, Core, Road, Terrain
- 6007382 iCON office Volume package, includes installation package, Core, Road, Terrain, Volume
- 6007383 iCON office Tunnel package, includes installation package, Core, Road, Tunnel

3 Update Service (Subscriptions)

- 849563, iCON office Update Service (subscription) 1 year
- 849565, iCON office Update Service (subscription) 2 years
- 868774, iCON office Update Service (subscription) 3 years
- 868776, iCON office subscription revival
This revival option should be used when subscription expired more than two years ago. The new subscription will be valid one year ahead from the date of purchase.

Provide serial number of the license or the hardware lock ID, when you order an extension of license (update service). Use Dongle Tool to update the USB hardware lock with the license.

4 Leica myWorld

Please use Leica myWorld to find the latest version of the software. Access Leica myWorld by using the following link:

<https://myworld.leica-geosystems.com/>

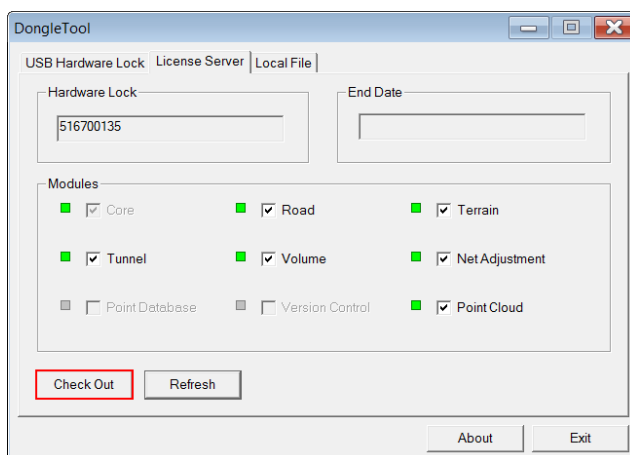
- If it is a new iCON office installation the HASP driver must be installed so the computer can recognize the USB hardware lock.
- Point cloud utility is the point cloud engine and must only be installed if the point cloud module is purchased.



Menu of the installation package

5 Dongle Tool

Use **Dongle Tool** to update the hardware lock with extended subscription for Leica iCON office or to unlock new modules purchased for the license. Place an order using your normal order channels and when the logistics has processed your order, you can run Dongle Tool and update the USB hardware lock.



1. Insert the HASP hardware lock into the USB port.
2. Go to Start >> All Programs >> Leica Geosystems >> iCON office and select Dongle Tool.
3. To change the subscription date or to add/remove modules it is first necessary to check in the current license to the license server. This is done by pressing **Check In**.
4. Switch to the **License Server** tab. Select the modules open for use and then press **Check Out**.

This will give the hardware lock a new certificate containing the updated information.