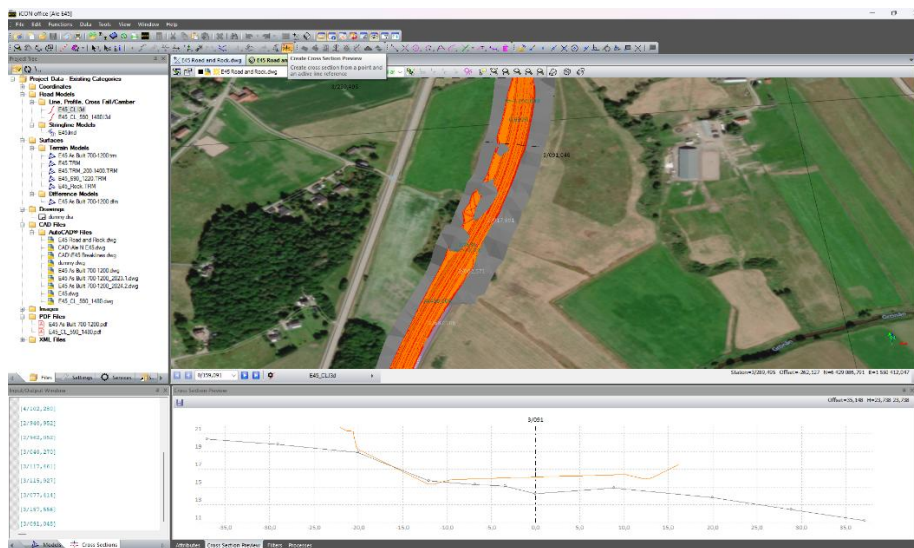


**Product:** iCON office  
**Date:** 23rd of April 2025  
**From:** Torgny Israelsson



## Release of iCON office version 2025.1.3

We are pleased to announce an engineering release of iCON office, **version 2025.1.3**. In this version mainly maintenance and bug fixes are done.



All users with valid maintenance will be able to install and run this new version.

## Contents

1	Improvements .....	2
1.1	Graphics .....	2
1.2	AutoCAD.....	2
1.3	Terrain Models .....	2
2	Bug Fixes and Maintenance.....	2
3	iCON office Licensing.....	3
3.1	Articles.....	3
4	Leica myWorld .....	3

# 1 Improvements

## 1.1 Graphics

If a computer has more than one graphic card installed, iCON office will automatically use the high-performance card. Earlier the user sometimes had to go to Settings > System > Display > Graphics, to defined preferred graphic card.

## 1.2 AutoCAD

- DWG containing object with height = 0, is now visualized at height level 0 in 3D window and not on the reference grid.
- Document properties for DWG/DXF files – New option in the property dialog called, Clamped to reference grid, and if selected, all objects are drawn on the reference grid in 3D window.

## 1.3 Terrain Models

- Graphical properties for terrain models are now saved separately for 2D and 3D, so different default settings can be used in 2D, and 3D window.

# 2 Bug Fixes and Maintenance

- LandXML - Issue when importing one horizontal alignment with two vertical profiles. Fixed
- HeXML - Schema version 2.1 is added. In some cases, Captivate is exporting coordinate system with schema 2.1.
- ESRI Shape - Imported of line with color, the color attribute was not imported. Fixed
- Updated Polish translation
- Updated Swedish translation
- Bricsys 24/7 - Empty project list in the select project dialog. Fixed
- Trench - Some bugs and issues when creating excavation models of complex trenches are fixed.
- Trench - When cut volumes for service trenches were calculated and the merged model of trenches and top surface couldn't be created, the theoretical trench depth was used instead. This could cause wrong cut volumes for service trenches. Fixed
- Trench - Crash when inserting a side pipe and changing name in the import wizard. Fixed
- Protection fill was drawn differently when exported from drawing to DWG. Fixed
- Coordinate file - If a coordinate file was open in both 2D and 3D window, a change of properties in one view did affect the other view as well. Fixed
- Cut terrain model - Not possible to change the station limits. Fixed
- Cross section - In the dialog to create cross section areas between layers, long layer names were not visible. Fixed
- Create new project - Shortcut templates were not used correctly in some cases. Fixed
- Compare files - Line names were not added to the report. Fixed
- Point cloud - Some point clouds were not visualized when integrated graphic card was used. Fixed
- Net adjustment - File (\*.hna) without observations cannot be opened. Fixed
- View > Toolbar - Toolbar for point cloud and help layer could not be toggled on/off. Fixed
- Drawing - If a terrain model was added to a drawing and saved and reopened again, the application could crash. Fixed

### 3 iCON office Licensing

#### 3.1 Articles

iCON office starts with **Core**, which enables import/export of data, 3D visualization, COGO calculations, coordinate system handling, visualization in Google Earth and generating of drawings etc.

Base Software		
971847	iCON office Core	It features import/export and COGO functionality and can be upgraded with various options.
Options		
971848	iCON office Road	iCON office Core is required for upgrading.
971849	iCON office Terrain	iCON office Core is required for upgrading.
971854	iCON office Trench	iCON office Core and Terrain are required for upgrading.
971853	iCON office Point Cloud	iCON office Core and Terrain are required for upgrading.
971850	iCON office Volume	iCON office Core, Road and Terrain are required for upgrading.
971851	iCON office Tunnel	iCON office Core, Road and Terrain are required for upgrading.
971852	iCON office Net Adjustment	iCON office Core is required for upgrading.
CCP		
6017858	1yr iCON office CCP	iCON office CCP extended one year
6017859	2yr iCON office CCP	iCON office CCP extended two years
6017860	3yr iCON office CCP	iCON office CCP extended three years
Migration		
971913	iCON office Migration	Migration from dongle to EIDs. Valid CCP is required.
Re-activation		
5311599	Re-activation Fee iCON office (>1yr)	Re-activation Fee iCON office (>1yr) applied if maintenance expired for +365days

### 4 Leica myWorld

Please use Leica myWorld to find the latest version of iCON office.

- myWorld >> my Downloads >> iCON >> iCON office) by using the following link:  
<https://myworld.leica-geosystems.com/>