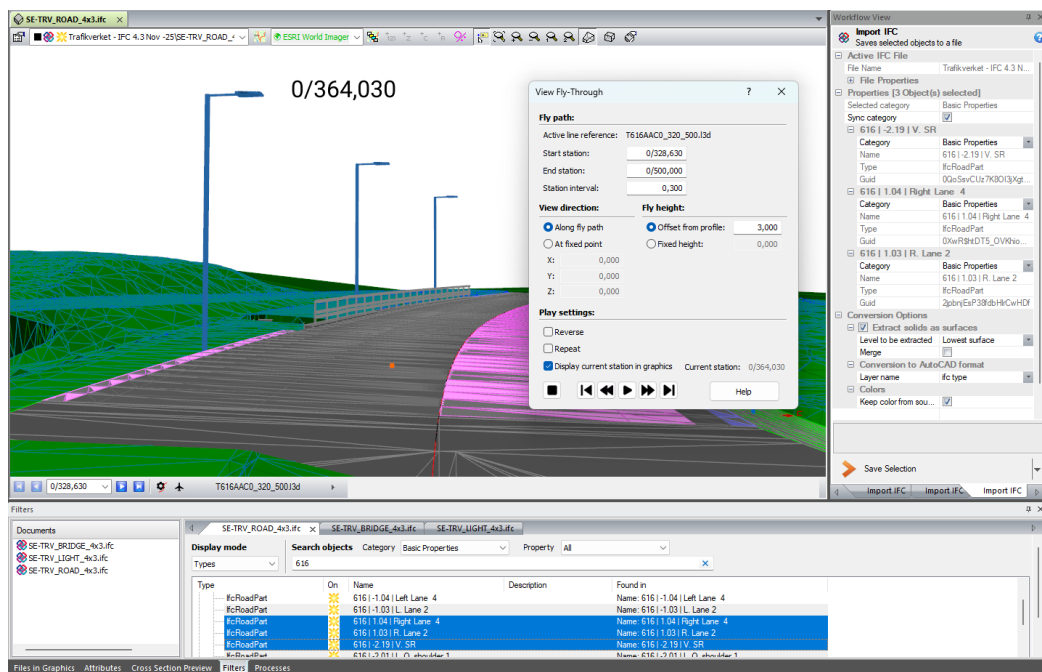


Leica iCON office v2026.1.3

Release Notes

Product Leica iCON office
Date 22nd December 2025
From Torgny Israelsson



Release of Leica iCON office version 2026.1.3

We are pleased to release Leica iCON office, **version 2026.1.3**. In this version, the focus has been to improve IFC workflows and 3D graphics. With new graphical IFC selection options and improved IFC search functionality, it's easier to find and import certain IFC objects for further processing. The fly-through function in the 3D window has been updated with new features, and the algorithm used to find the rotation point has been improved.

With the new window, Files in Graphics, small but frequent daily tasks such as turning file visibility on and off, point/line names and height information, when working with multiple layers of open files, can be done faster and smoother. Combined with other improvements, such as file and code search in multiple dialogues, the number of required clicks to perform everyday tasks is significantly reduced.

With the new menu option, "Save Window Layout," the user can save the modified size, width, and location of different windows, panes, and toolbars as a layout. Multiple window layouts can be saved and dedicated to different workflows.

All users with valid maintenance will be able to install and run this new version.

Please take your time to read these Release Notes!

The release notes contain important information about the new version of the Leica iCON office software and application features.

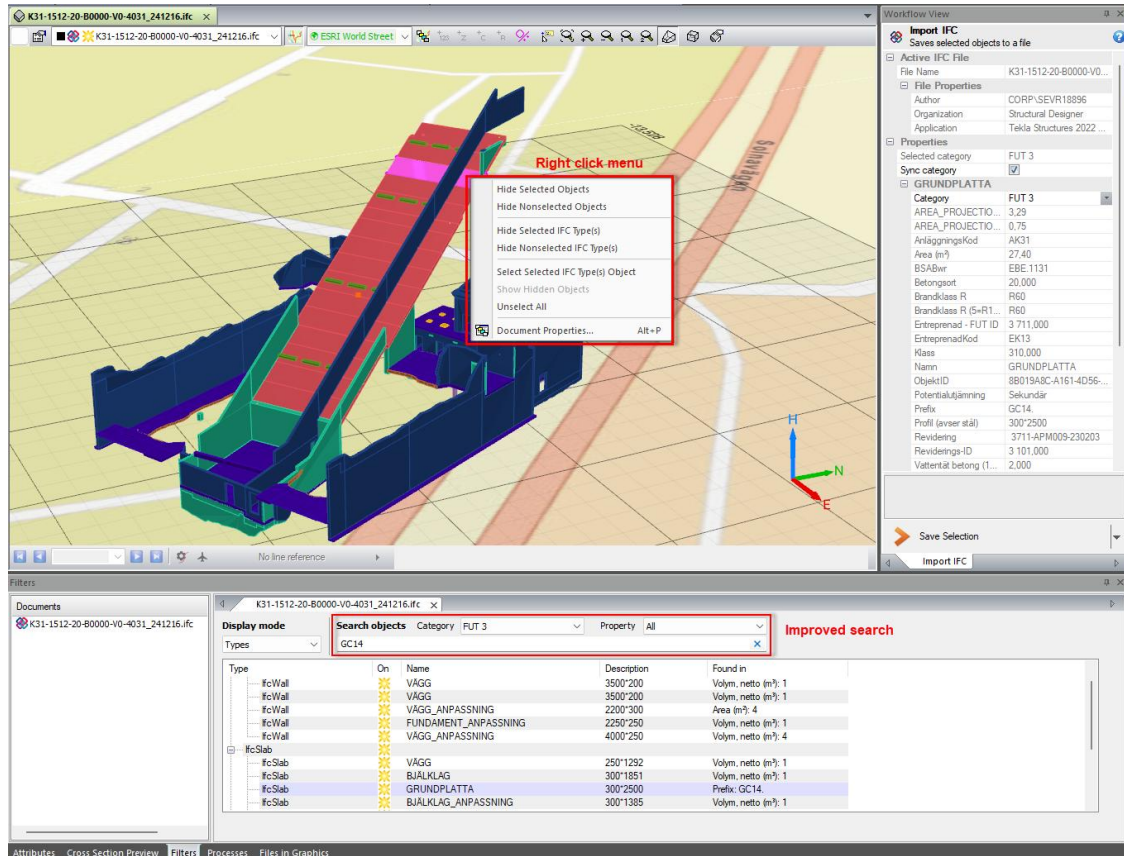
Table of Contents

1	Improvements	4
1.1	IFC – Improved Workflows	4
1.1.1	IFC Context Menu.....	4
1.1.2	IFC Search in Filter View.....	5
1.1.3	Extract IFC Solids as Surfaces.....	5
1.2	3D Graphic	6
1.2.1	3D Window - Updated Fly Through	6
1.2.2	3D Window - Rotation Centre.....	7
1.3	Files in Graphics.....	7
1.4	File Search in Dialog	7
1.5	Code Search.....	8
1.6	Save Window Layout.....	8
1.7	AutoCAD.....	9
1.8	LandXML Export.....	10
1.9	Coordinate Files – Water Flow Direction.....	11
1.10	Terrain Model	11
2	Bug Fixes and Maintenance.....	12
3	Leica iCON office Licensing	13
3.1	Article Numbers	13
4	Leica myWorld	13

1 Improvements

1.1 IFC – Improved Workflows

New functionalities to search and find objects in large and heavy IFC models. Both in the graphical window and in the IFC filter view, several improvements have been added to make it easier to extract data for both stake-out and data preparation for machine control.



IFC right-click menu in the graphics and IFC filter view with search settings

1.1.1 IFC Context Menu

If you have been using the select tool and graphics to hide, select or extract objects from AutoCAD DWG/DXF files, you will recognise the new context menu available for IFC files. Select objects in the graphics and use the options in the new right-click menu:

- **Toggle on/off options:**
 - Hide selected objects
 - Hide non-selected objects
 - Hide selected IFC Type(s)
 - Hide non-selected IFC Type(s)
- **Select options**
 - Select selected IFC Type(s) objects – All objects of the selected IFC Type or IFC Types are selected.
 - Unselect all
- **Show hidden objects** - With this option, all hidden objects that are toggled off from the Filter View or the graphics are visualised again.

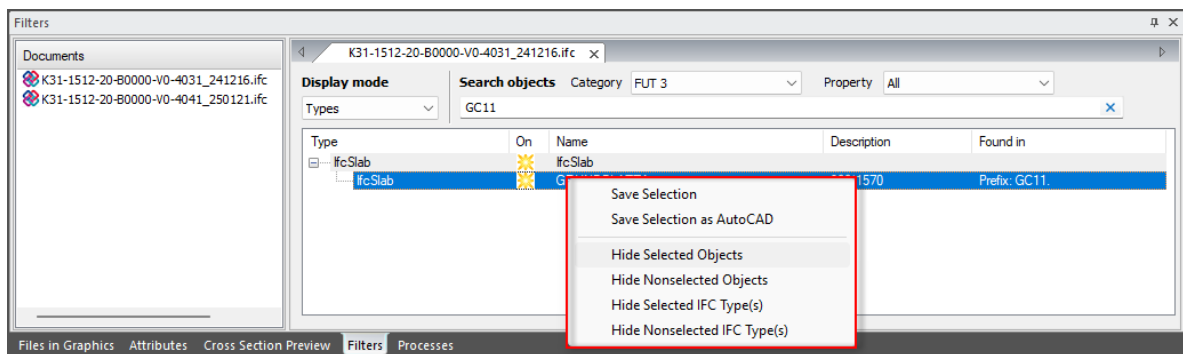
1.1.2 IFC Search in Filter View

The search available in the filter view is improved, and now it's possible to search for any property. Earlier, only the name, description and IFC type were included in the search.

- To get a more effective search and a limited list of matched results, there are two new settings that can be used:
 - **Category** - Select all, or which category to include in the search.
 - **Property** - Select all, or which property to include in the search.

In many projects, specific categories or properties are used when identifying objects. With the new settings above, the search results can be more fine-grained.

- When listed objects are selected, the context menu in the filter view is updated with the following options:
 - Hide selected objects
 - Hide nonselected objects
 - Hide selected IFC Type(s)
 - Hide nonselected IFC Type(s)

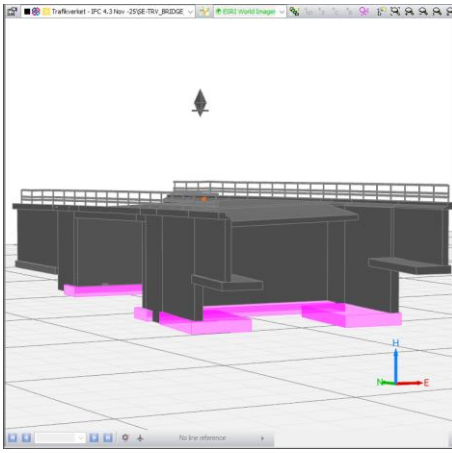


IFC Filter View – Search result for the search GC11 and it is found in a property called Prefix.

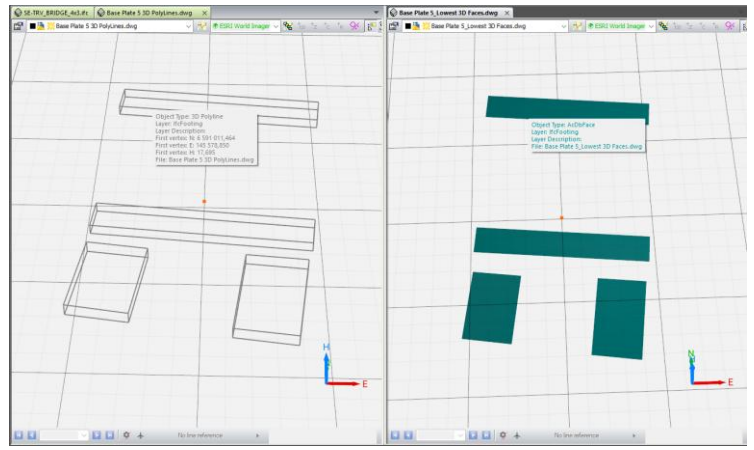
1.1.3 Extract IFC Solids as Surfaces

Two improvements have been made for the option to generate surfaces, highest or lowest level, of selected IFC solids.

- **Merge** – A new setting in the IFC workflow view.
 - If activated and multiple solids are selected, the extracted surfaces are merged into one surface file (*.trm).
 - If not selected, an individual surface file for every solid is created, even if multiple solids are selected.
- **Save selection as AutoCAD** – Improvements when saving selected IFC objects to a DWG file.
 - If the option, Extract solids as surfaces, is used and selected, IFC objects are saved directly to AutoCAD format, and the objects are now saved as 3D faces in the DWG file.
 - If the option, Extract solids as surfaces, is not activated, the selected IFC objects are saved as 3D polylines in the DWG file.



Selected IFC objects



Selected objects saved as 3D poly lines and 3D face in DWG files.

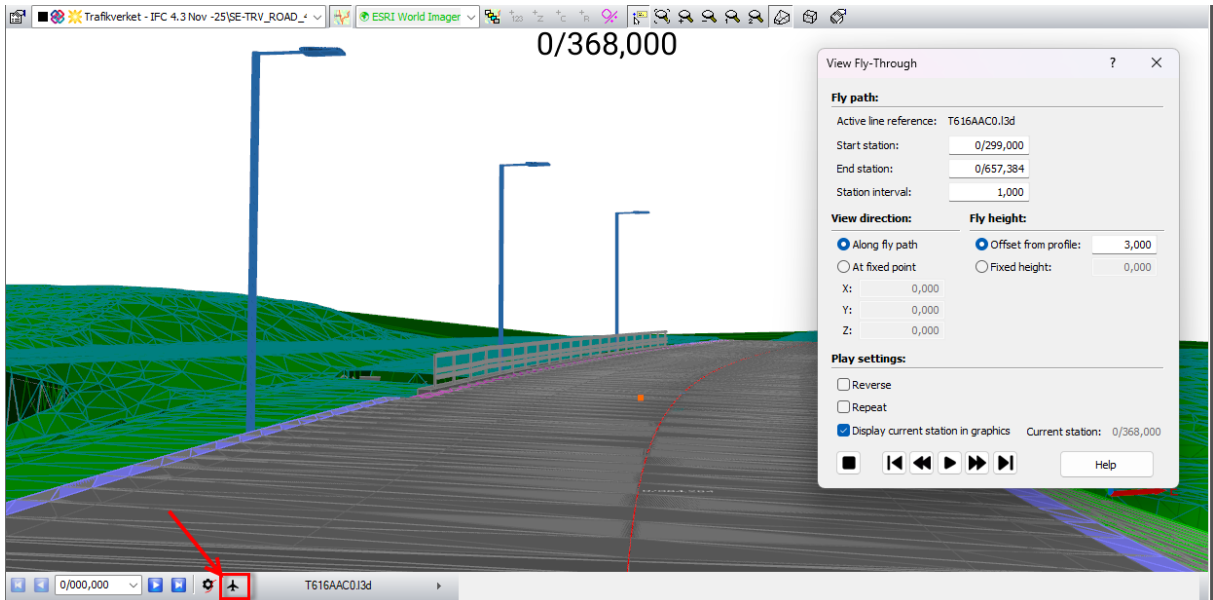
1.2 3D Graphic

1.2.1 3D Window - Updated Fly Through

The function to fly through a model using a road line as fly path is improved and easily accessible by a shortcut icon next to the active reference line, at the bottom of the 3D window.

The fly-through dialogue is updated with more settings:

- Start and end station – The fly path can be limited by changing the start and end station of the used line
- Pause control is added so the visualisation can be temporarily stopped at interesting sections.
- Options to manually step forward and backwards.
- The current station information can be displayed both in the dialogue and the graphical window.



Fly-through along a road line in an IFC model

1.2.2 3D Window - Rotation Centre

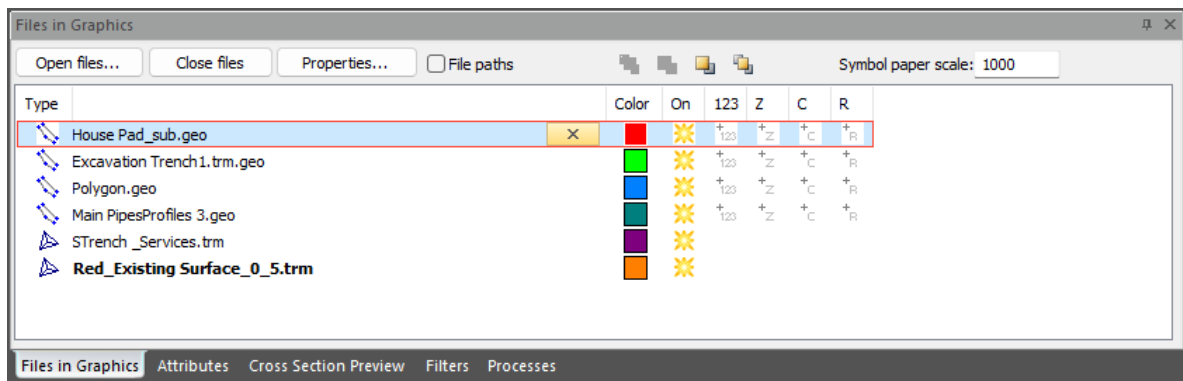
Improved algorithm for how the centre of rotation in 3D window is defined for surface and line objects in the following formats:

- TRM, DWG/DXF, IFC and LandXML
 - If the cursor is held over an object, when the mouse button or the space-bar is pressed, that object and its height decide the rotation centre.
 - If no object is found, the rotation centre is determined like today i.e., at the centre of all visible objects.
- For other file formats, the rotation centre is defined as the centre of all visible objects.

1.3 Files in Graphics

New window, **Files in Graphics**, to manage open files in graphics and it will replace the old modal dialog, Document in Graphical View.

- **Dock able window** → The user can decide where the window should be placed to have good accessibility when working. It could even be displayed on a separate screen.
- **Non-modal window** → The window is not blocking the application, so the user can continue to interact with e.g. the graphic window.



Files in Graphics – Default position is in the bottom right corner.

From Files in Graphics, you have easy access to:

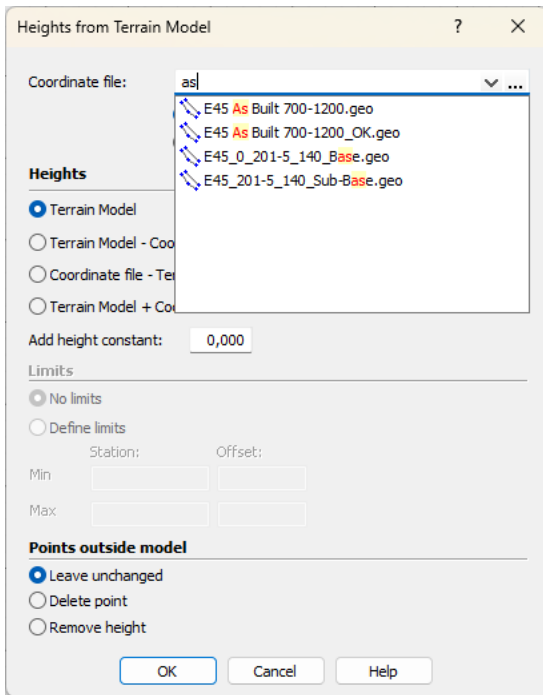
- Close files by using either the X symbol or the buttons.
- Open additional files in the active graphical window.
- Toggle file visibility on/off.
- Turn point/line information on/off.
- Change active file by double-clicking on a file name.
- Change the drawing order of files in 2D window.

while you still can have access to the application and the graphical window.

1.4 File Search in Dialog

Search functionality has been added to several dialogs to make it easier and faster to select input files, instead of using the browse option.

- Instant search and matched results are highlighted.
- Filter – Only files of the expected file type(s) are listed.
- All files available in the project folder and its subfolders are included in the search.
- The list of files found is sorted based on matched percentage.

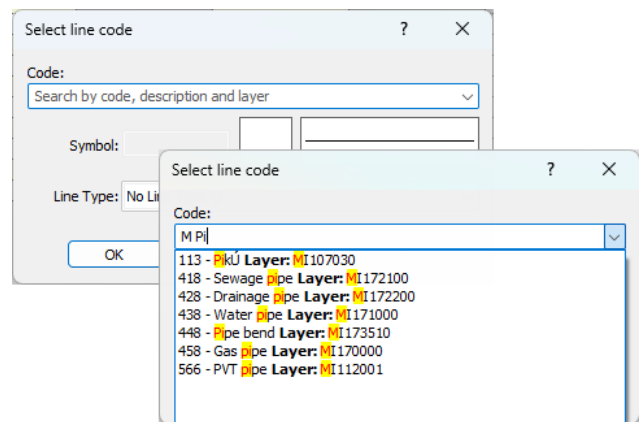


File search in a dialog with highlighted matched results.

1.5 Code Search

If a code list is selected for the active project, search functionality is available in the dialogs, **Select Point Code** and **Select Line Code**. The code list is defined in project settings and can be opened from File > Open active Code List.

- It is possible to search by code, description or layer.
- Instant search and matched results are highlighted.
- It's still possible to add any code manually i.e., even a code not available in the active code list.



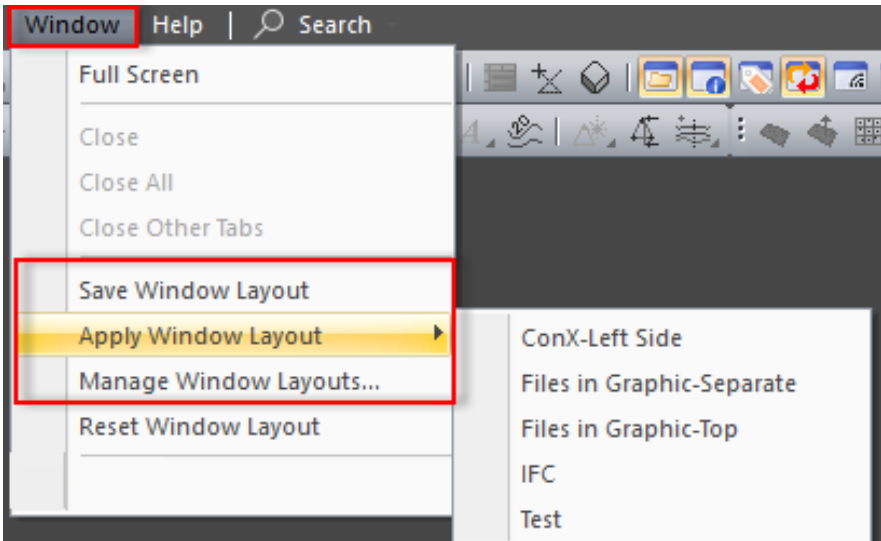
Code search and highlighted results

1.6 Save Window Layout

In Leica iCON office it is possible to move and resize different windows, views/panes and toolbars depending on what is most suitable for the current workflow and personal preferences. The Window menu is updated with three more options, so the user can create, save and manage multiple user-defined window layouts, instead of modifying them every time they do a specific workflow.

- New options:
 - **Save Window Layout** – The current window layout is saved with any name i.e., the current size, width and location of all windows, panes and toolbars are saved.
 - **Apply Window Layout** – Select active layout from a list of all saved layouts.
 - **Manage Window Layout** – Possible to rename or delete already saved layouts.

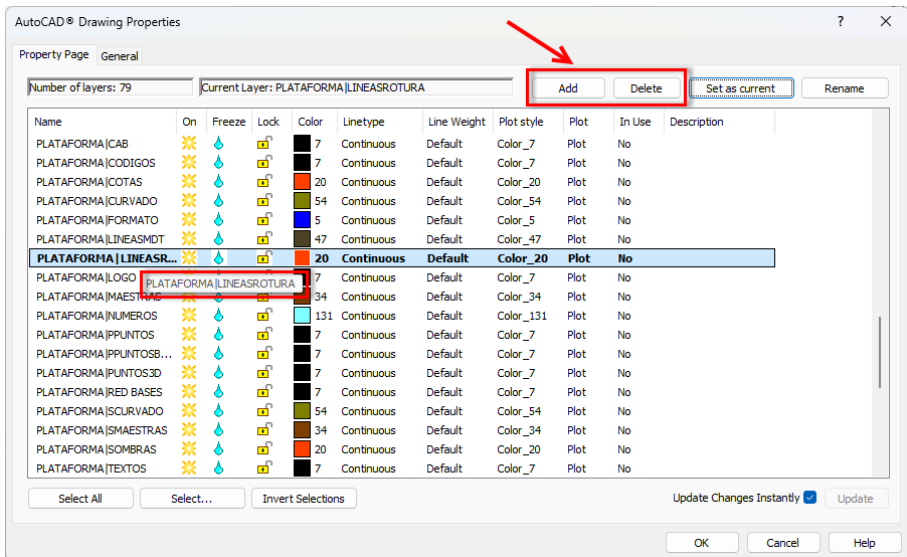
- **Restore Window Layout** - The restore function is improved and includes even toolbar layout and width of project tree, workflow and other views etc.



Menu options to save and manage layouts, in the screenshot, 5 layouts are saved.

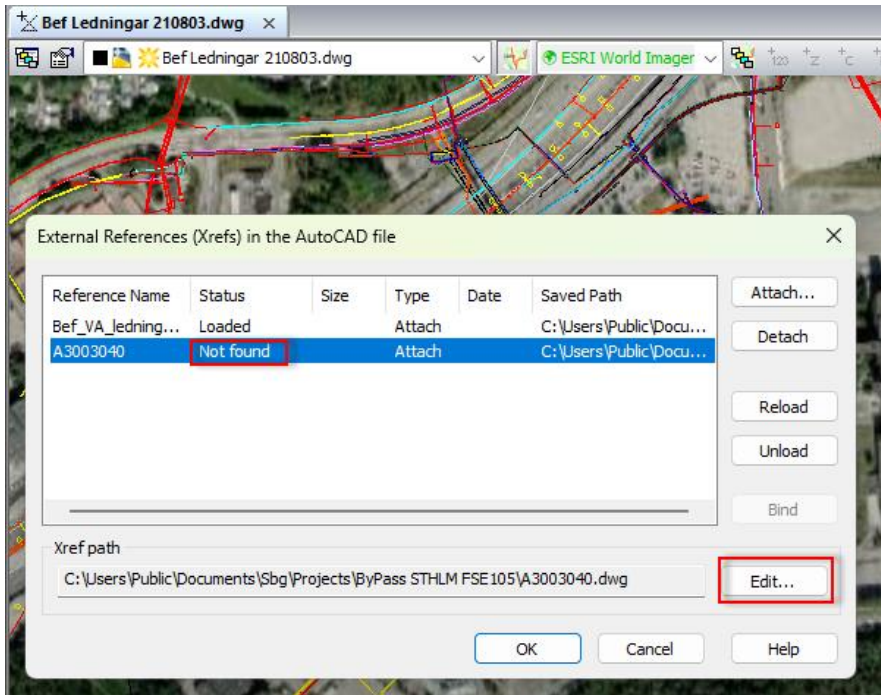
1.7 AutoCAD

- The property dialog for DWG/DXF files is updated with the following options:
 - New options to add and delete layers.
 - If layers are deleted, the user will get a chance to delete layer AND all entities linked to it.
 - Bold font is used for current layer.
 - Layer name is automatically displayed in tooltip, if the name column doesn't fit the full layer name.



File properties for CAD files with updated functionality to add and remove layers.

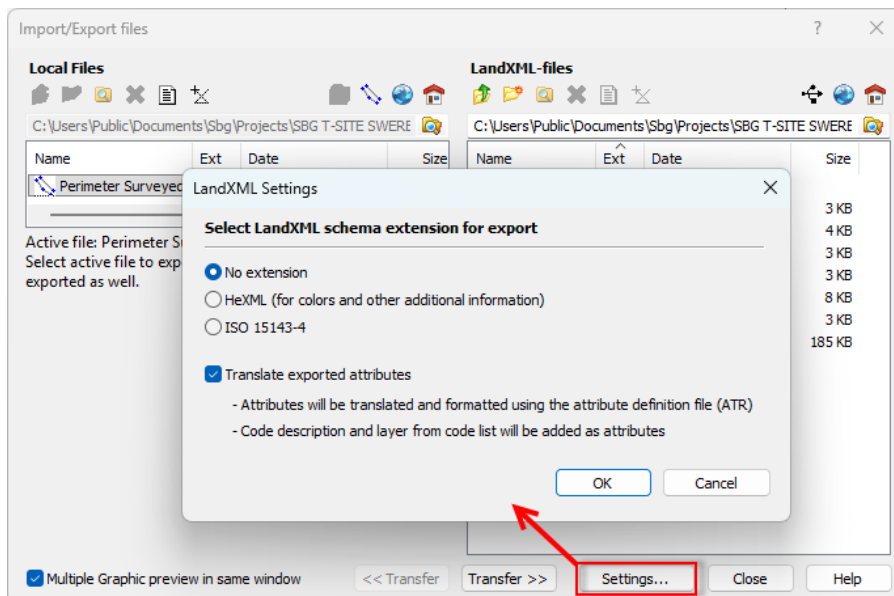
- AutoCAD files, with broken path to attached Xref file, can now be fixed if the user has access to the Xref file.
 - Select **Data > External References**, and in the visualised dialogue, it's possible to edit and fix broken Xref paths.



Dialogue to edit external references.

1.8 LandXML Export

- **Translation of exported attributes** - Points and lines can have attributes included in the export and if the new option, Translate exported attributes, is activated and an attribute file (*.atr) is selected in project settings, the attributes are formatted and translated according to descriptions available in the active attribute file.

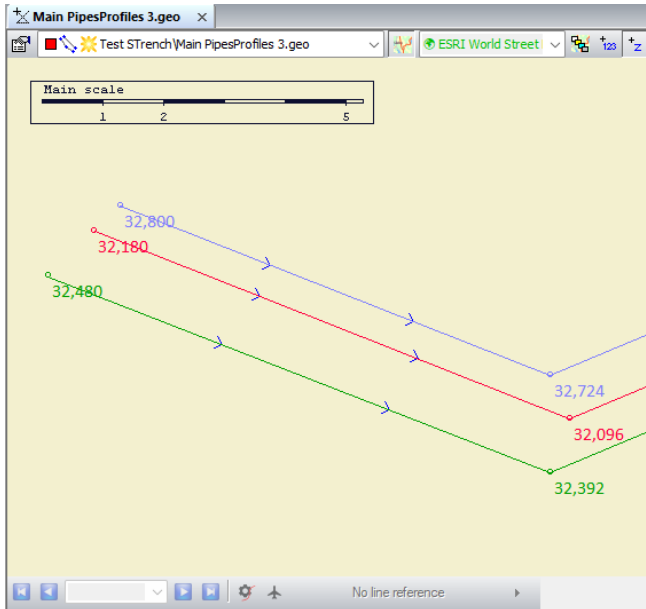


LandXML export settings

- **ISO LandXML Export** - The ISO schema is strict when it comes to duplicated names. A single point is not allowed to have the same ID/name as a line. New functionality to auto-resolve name conflicts between objects when exporting point and line data to ISO LandXML and DBX is implemented.

1.9 Coordinate Files – Water Flow Direction

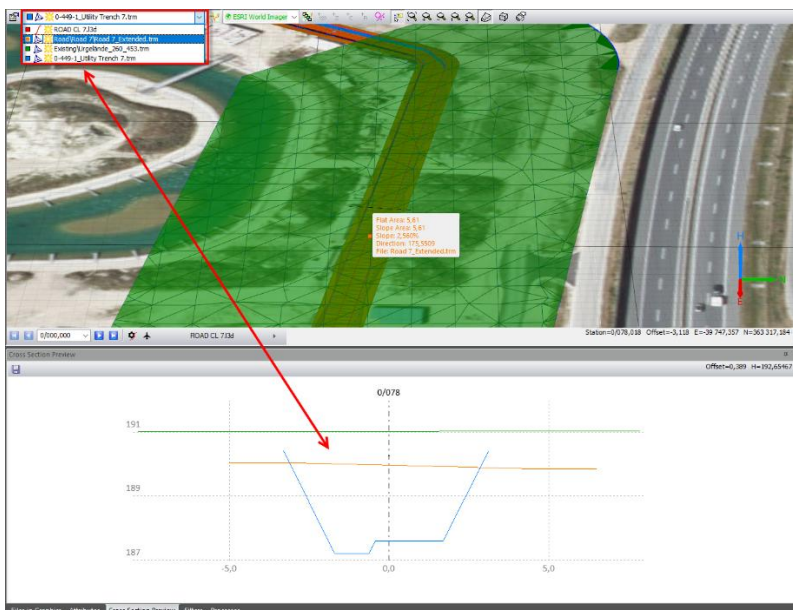
- **Water flow direction** – A new option to turn on a symbol to visualise flow direction for 3D lines. The setting can be toggled on in document properties for coordinate files.



Lines with water flow direction turned on.

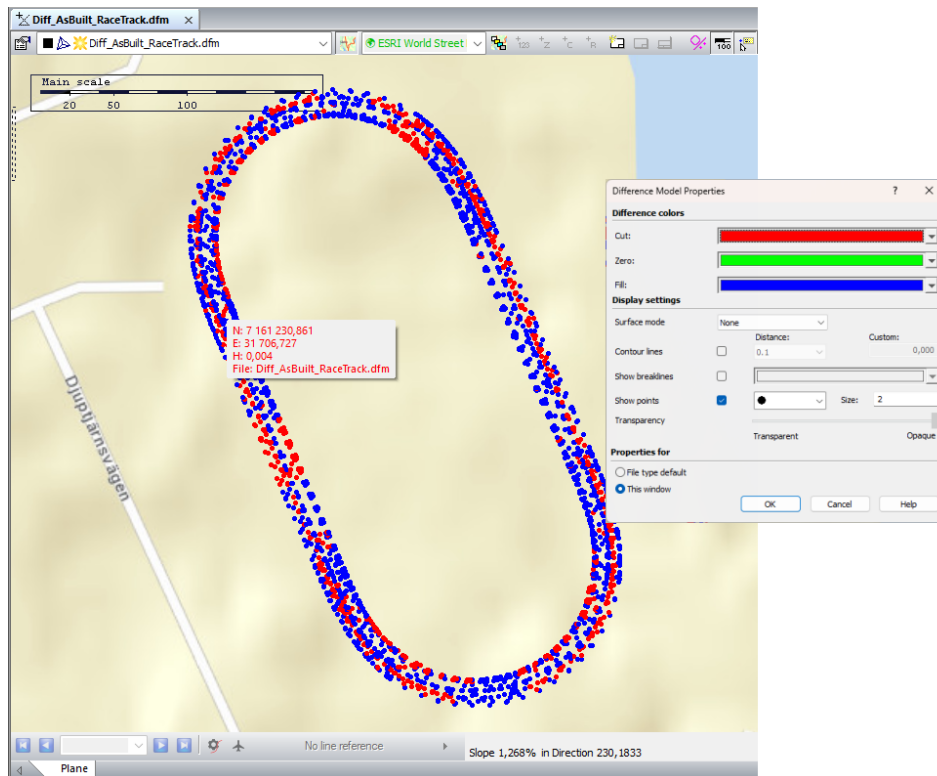
1.10 Terrain Model

- If a terrain model has a surface colour saved to file, the same colour is now used as identification colour, e.g. the colour used in Files in Graphics and as layer colour in Cross Section Preview.



Cross section preview

- Difference model – If the model is visualised in point mode instead of as a surface, the points are displayed with selected cut and fill colours.



The difference model is displayed with points in cut and fill colours.

2 Bug Fixes and Maintenance

- New installation - Not possible to create a new project, if the active project couldn't be read or if it was a new installation with no available projects. The application would stop working. Fixed
- Files in Graphics - Send backward did not work as expected. Fixed
- 3D graphics - Zoom with mouse wheel, when height was distorted, caused some issues. Fixed
- Crop Terrain Model - Crop model with a concave polygon; some gaps were observed. Fixed
- TS20 is added to the list of known total stations and the values for atmospheric correction are set accordingly.
- Help Text – The manual (select Help > Help Topics...) is updated with information on how to add images and screenshots to reports.
- Tunnel - Default colours for TDM are updated.
- Attribute list - The 20-character limit for Attribute Type and Description is removed, and the default width for both columns is increased.
- Length report - The report ignores points if special code R is used without a remark value added. Fixed
- Point symbols had different orientations in 2D and 3D windows. Fixed
- In the numerical view, the point code description was missing if a point code started with a dash. Fixed
- LandXML export - Line attributes were duplicated to next line. Fixed

3 Leica iCON office Licensing

3.1 Article Numbers

Leica iCON office starts with **Core**, which enables import/export of data, 3D visualisation, COGO calculations, coordinate system handling, visualisation in Google Earth and generating drawings, etc.

Base Software		
971847	iCON office Core	It features import/export and COGO functionality and can be upgraded with various options.
Options		
971848	iCON office Road	iCON office Core is required for upgrading.
971849	iCON office Terrain	iCON office Core is required for upgrading.
971854	iCON office Trench	iCON office Core and Terrain are required for upgrading.
971853	iCON office Point Cloud	iCON office Core and Terrain are required for upgrading.
971850	iCON office Volume	iCON office Core, Road and Terrain are required for upgrading.
971851	iCON office Tunnel	iCON office Core, Road and Terrain are required for upgrading.
971852	iCON office Net Adjustment	iCON office Core is required for upgrading.
CCP		
6017858	1yr iCON office CCP	iCON office CCP extended one year
6017859	2yr iCON office CCP	iCON office CCP extended two years
6017860	3yr iCON office CCP	iCON office CCP extended three years
Migration		
971913	iCON office Migration	Migration from dongle to EIDs. Valid CCP is required.
Re-activation		
5311599	Re-activation Fee iCON office (>1yr)	Re-activation Fee iCON office (>1yr) applied if maintenance expired for +365days

4 Leica myWorld

Please use Leica myWorld to find the latest version of iCON office.

- myWorld >> my Downloads >> iCON >> iCON office by using the following link: <https://myworld.leica-geosystems.com/>

myWorld